



Email: info@ycharter.com | Phone: 305.999.5839 | Fax: 866.880.6671

## LE REVE L620 ESSENCE



Length  
**62Ft**



Make  
**Lagoon**



Year  
**2017**



Staterooms  
**3**



Guests  
Sleeping  
**6**

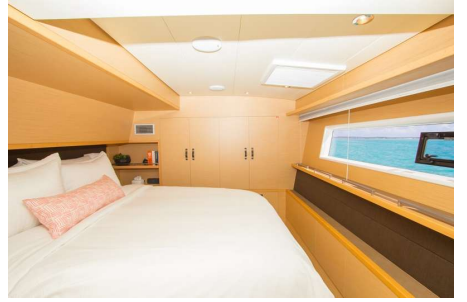


Crew  
**2**



Weekly  
**Low**  
**\$42,000**  
**High**  
**\$46,000**





## SPECIFICATIONS

**Wash Basins:** 4

**Heads:** 3

**Helipad:** No

**Jacuzzi:** No

**AC:** Full

**Preferred Pick up:** Village Cay, YHG

**Beam:** 33Ft

**Draft:** 5Ft

**Showers:** 3

**Engines/Generators:** 21KW forward day generator, 14KW aft generator (runs at night behind galley for silent cabins)



## WATER TOYS

**Dinghy HP:** 60

**Wave Runners:** No

**Scurfer:** No

**Swim Platform:** Yes

**Fishing Gear:** Yes

**U/Water Video:** Yes

**Dinghy # pax** 9

**Knee boards:** No

**Wake Board:** 1

**Boarding Ladder (Loc/Type):**

Yes

**Gear Type:** Trolling

**Water Skis Adult:** Yes

**Wind Surfer:** No

**Kayaks 1 Pax:** No

**Sailing Dinghy:** 15ft Highfield

**Water Skis Kids:** Yes

**Snorkel Gear:** Yes

**Kayaks (2 Pax):** No

**Deep Sea Fish:** Yes

### Other Toys:

Waydoo Efoil

Kiteboard with 11m, 14m, and 17m kites

Wing Foil with Learn to Ride system

WaterRower Rowing Machine

Drone on board. Captain will take photo/video during charter for guests.

Apple TV and multiple streaming services available in every cabin w/1000+ downloaded movies



Assorted board and card games

## Communications:

Starlink Global Mobile Maritime Satellite WiFi  
Sirius XM Satellite Radio

## Other Entertainments:

500+ bottle fine wine collection  
Clear Ice maker (best for cocktails)  
Custom Floating Bar  
Outdoor Rain Shower  
AED and advanced first aid equipment aboard  
Vibration and sound insulated primary generator  
Full power port aft generator for quiet night operations  
1700 watt solar array with custom extended flybridge bimini  
Lithium Battery Bank  
Custom Victron Quattro Power System  
Custom Matternoll Luxury Dream mattresses  
Hot tub available for sleep aboard guests (not available away from the marina)  
Hull Shield Anti-Fouling System

## CALENDAR

### Locations

Summer base port: Newport & Narragansett Bay, Rhode Island Summer operating area: Rhode Island, Cape Cod, Martha's Vineyard, and Nantucket BVI pick-up & drop-off required for BVI based charters (Village Cay)

#### Summer Operating Ports

Caribbean Virgin Islands (US/BVI), USA - New England, Caribbean Virgin Islands (US), Caribbean Virgin Islands (BVI)

#### Winter Operating Ports

Caribbean Virgin Islands (US/BVI), Caribbean Virgin Islands (US), Caribbean Virgin Islands (BVI)

Start Date	End Date	Details
Dec 28, 2024	Jan 04, 2025	Booked: Tortola, Village Cay, BVI to Tortola, Village Cay, BVI
Jan 18, 2025	Jan 24, 2025	Booked: Tortola, Village Cay, BVI to Tortola, Village Cay, BVI
Feb 10, 2025	Feb 17, 2025	Booked: Scrub Island - BVI to Trellis Bay, Tortola
Mar 22, 2025	Mar 29, 2025	Booked: Tortola, Village Cay, BVI to Tortola, Village Cay, BVI
Apr 02, 2025	Apr 09, 2025	Booked: St Barths to St Barths
Apr 19, 2025	Apr 28, 2025	Booked: St Martin to St Martin
Jun 01, 2025	Jun 30, 2025	Transit: British Virgin Islands* to Newport, RI*
Aug 16, 2025	Aug 22, 2025	Booked: Newport, RI* to Newport, RI*
Oct 01, 2025	Oct 31, 2025	Transit: Newport, RI* to British Virgin Islands*

Nov 14, 2025

Nov 22, 2025

Booked: Tortola, Village Cay, BVI to Tortola, Village Cay, BVI

## Y Charter

### Corporate Office

3363 Sunny Isles Blvd, Suite 507  
N Miami Beach, FL 33160

### South Beach Office

407 Lincoln Rd, Suite 507  
Miami Beach FL 33139

Email: [info@ycharter.com](mailto:info@ycharter.com) | Phone: 305.999.5839 | Fax: 866.880.6671 | Website: [www.ycharter.com](http://www.ycharter.com)