



Email: info@ycharter.com | Phone: 305.999.5839 | Fax: 866.880.6671

## ASLEC 4



Length  
**48m**



Make



Year  
**2012**



Staterooms  
**5**



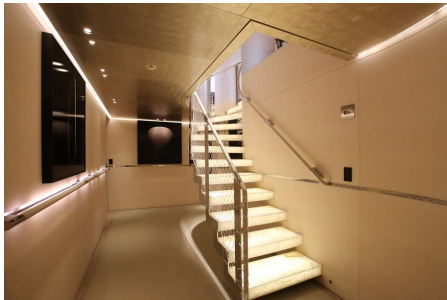
Guests  
Sleeping  
**10**

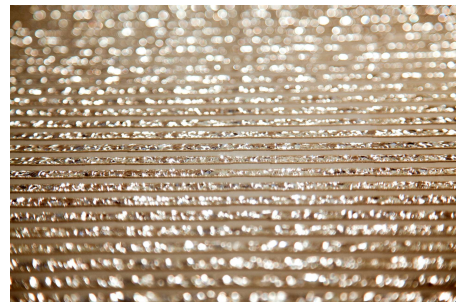


Crew  
**9**



Weekly  
**Low**  
**€265,000**  
**High**  
**€180,000**





## SPECIFICATIONS

**Helipad:** No

**Jacuzzi:** Yes

**AC:** Full

**Preferred Pick up:** Cala Galera, Tuscany

**Beam:** 9.2m

**Draft:** 2.6m

**Refit:** 2021

**Engines/Generators:** Caterpillar 1300 HP x 2

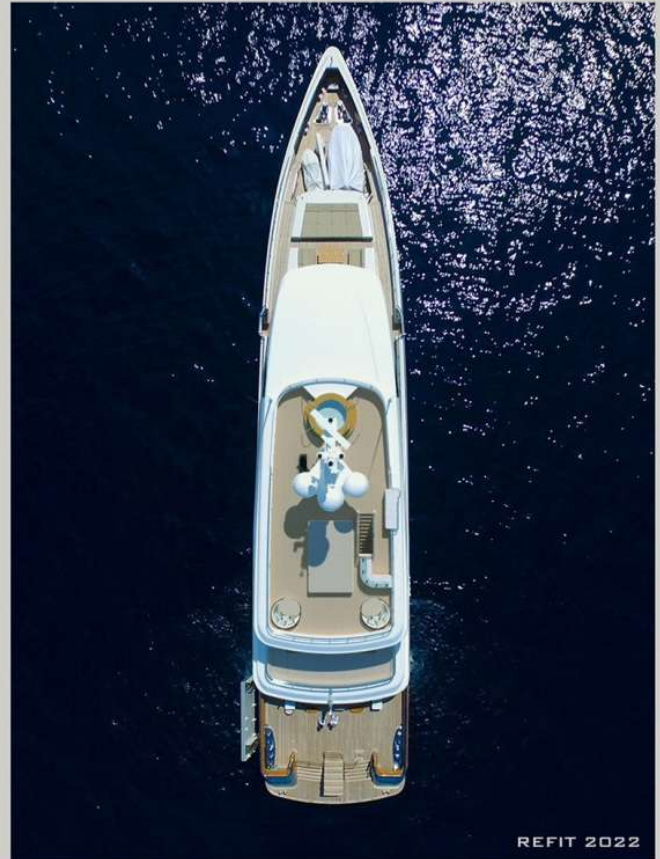
Generator 15 lt / hr

**Fuel Consumption:** 300

**Cruising Speed:** 13

**Max Speed:** 16

asher 4



## WATER TOYS

**Fishing Gear:** Yes  
**Dinghy # pax** 9

**Wake Board:** 2  
**Water Skis Adult:** Yes  
**Kayaks 1 Pax:** 4  
**Sailing Dinghy:** 2

**Snorkel Gear:** Yes

### Other Toys:

Jetsurf Ultrasport  
Foil  
Anti jellyfish pool

### Communications:

Kleindescape Movie system  
Teppanyaki grill

# CALENDAR

## Locations

Homeport: Cala Galera, Argentario (Tuscany). Can be delivered to all main ports: Naples, Rome, Olbia, Portofino, Genoa, Porto Cervo Palermo upon request Can navigate in France/Corsica, but the embarkation has to be in Italy (the disembarkation can be anywhere)

### Summer Operating Ports

W. Med -Naples/Sicily, W. Med -Riviera/Cors/Sard.

### Winter Operating Ports

W. Med -Naples/Sicily, W. Med -Riviera/Cors/Sard.

No Calendar Data available.  
Please contact clearing house

## Y Charter

### Corporate Office

3363 Sunny Isles Blvd, Suite 507  
N Miami Beach, FL 33160

### South Beach Office

407 Lincoln Rd, Suite 507  
Miami Beach FL 33139

Email: [info@ycharter.com](mailto:info@ycharter.com) | Phone: 305.999.5839 | Fax: 866.880.6671 | Website: [www.ycharter.com](http://www.ycharter.com)