



Email: info@ycharter.com | Phone: 305.999.5839 | Fax: 866.880.6671

## OVER REEF



Length  
**54Ft**



Make  
**.**



Year  
**2019**



Staterooms  
**3**



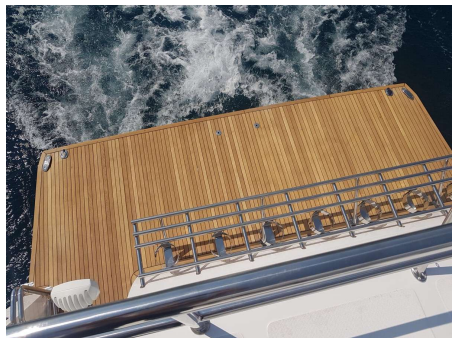
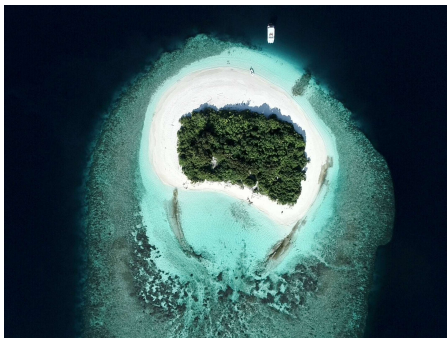
Guests  
Sleeping  
**6**

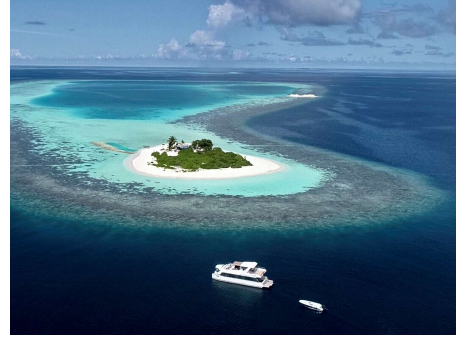


Crew  
**4**



Weekly  
**Low**  
**\$15,315**  
**High**  
**\$26,796**





## SPECIFICATIONS

**Wash Basins:** 2

**Heads:** 2

**Helipad:** No

**Jacuzzi:** No

**AC:** Full

**Preferred Pick up:** Male Airport, Maldives

**Beam:** 18Ft

**Draft:** 6Ft

**Showers:** 2

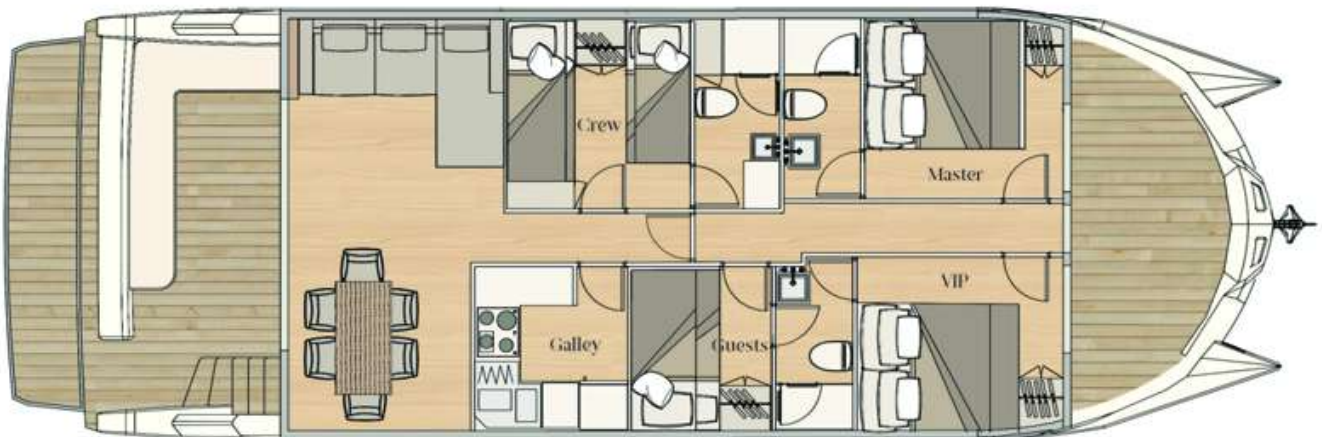
**Engines/Generators:** Engines: 2 x Volvo D3-200 -  
Generator: Onan 11 kW

**Range:** 250

**Fuel Consumption:** 40

**Cruising Speed:** 7

**Max Speed:** 8



## WATER TOYS

**Dinghy HP:** 110

**Wake Board:** No

**Water Skis Kids:** No

**Wave Runners:** No  
**Scurfer:** No  
**Swim Platform:** Yes  
**Fishing Gear:** Yes  
**U/Water Video:** No  
**Dinghy # pax** 8  
**Knee boards:** No

**Boarding Ladder (Loc/Type):**  
Aft Platform  
**Gear Type:** Trawling-Spinning  
**Water Skis Adult:** No  
**Wind Surfer:** No  
**Kayaks 1 Pax:** No  
**Sailing Dinghy:** 19ft/6m  
Boston Whaler

**Snorkel Gear:** Yes  
**Kayaks (2 Pax):** No  
**Deep Sea Fish:** No

### Communications:

Satellite Phone

### Other Entertainments:

Nespresso Coffee Machine

## CALENDAR

### Locations

Over Reef is available from Male International Airport or from selected resorts. Yacht delivery or re-delivery other than to Male International Airport is not included in the charter rates.

#### Summer Operating Ports

Indian Ocean and SE Asia

#### Winter Operating Ports

Indian Ocean and SE Asia

Start Date	End Date	Details
Dec 22, 2024	Jan 05, 2025	Booked: Male, Maldives Islands* to Male, Maldives Islands*
Jan 12, 2025	Jan 19, 2025	Booked: Male, Maldives Islands* to Male, Maldives Islands*
Jan 25, 2025	Jan 29, 2025	Booked: Male, Maldives Islands* to Male, Maldives Islands*
Apr 12, 2025	Apr 19, 2025	Booked: Male, Maldives Islands* to Male, Maldives Islands*
Apr 21, 2025	May 01, 2025	Booked: Male, Maldives Islands* to Male, Maldives Islands*

### Y Charter

**Corporate Office**  
3363 Sunny Isles Blvd, Suite 507  
N Miami Beach, FL 33160

**South Beach Office**  
407 Lincoln Rd, Suite 507  
Miami Beach FL 33139

Email: [info@ycharter.com](mailto:info@ycharter.com) | Phone: 305.999.5839 | Fax: 866.880.6671 | Website: [www.ycharter.com](http://www.ycharter.com)